

- 3 Type**
- P** Mounting the Z-axis via connecting plate and additional plate
  - S** Direct mounting of the Z-axis via connecting plate

<b>1</b> <b>b</b> Size of the slide	<b>2</b> <b>l<sub>1</sub></b>	<b>d<sub>1</sub></b> Grub screw DIN 913	<b>d<sub>2</sub></b> Socket cap screws DIN 912	<b>l<sub>2</sub></b>	<b>l<sub>3</sub></b>	<b>l<sub>4</sub></b>	<b>s</b>
30	30	M 4	M 2,5	41	17	6	6
50	50	M 5	M 3	67	32	8	8
80	80	M 6	M 4	105	52	13	12
120	120	M 8	M 5	145	82	13	16

**Specification**

- Aluminum  
Anodized, natural color
- Grub screw DIN 912  
Steel, zinc plated
- Socket cap screws DIN 912  
Stainless steel
- **RoHS**

**Information**

With connecting sets GN 900.3 two adjustable slide units GN 900 can be combined to produce an X-Z axis configuration.

The combination is created by using two connection plates which eliminate any type of fixing holes in the slides. At the same time the adjustable slide unit with the Z-axis can, to a limited extent (vertically to the Z-axis), still be adjusted.

In the case of a slide configuration of the Z-axis parallel to the reference axis (Type P) an adaptor plate (complete with a fastening set, small fixing plates and socket head cap screws) is required which is included in the set.

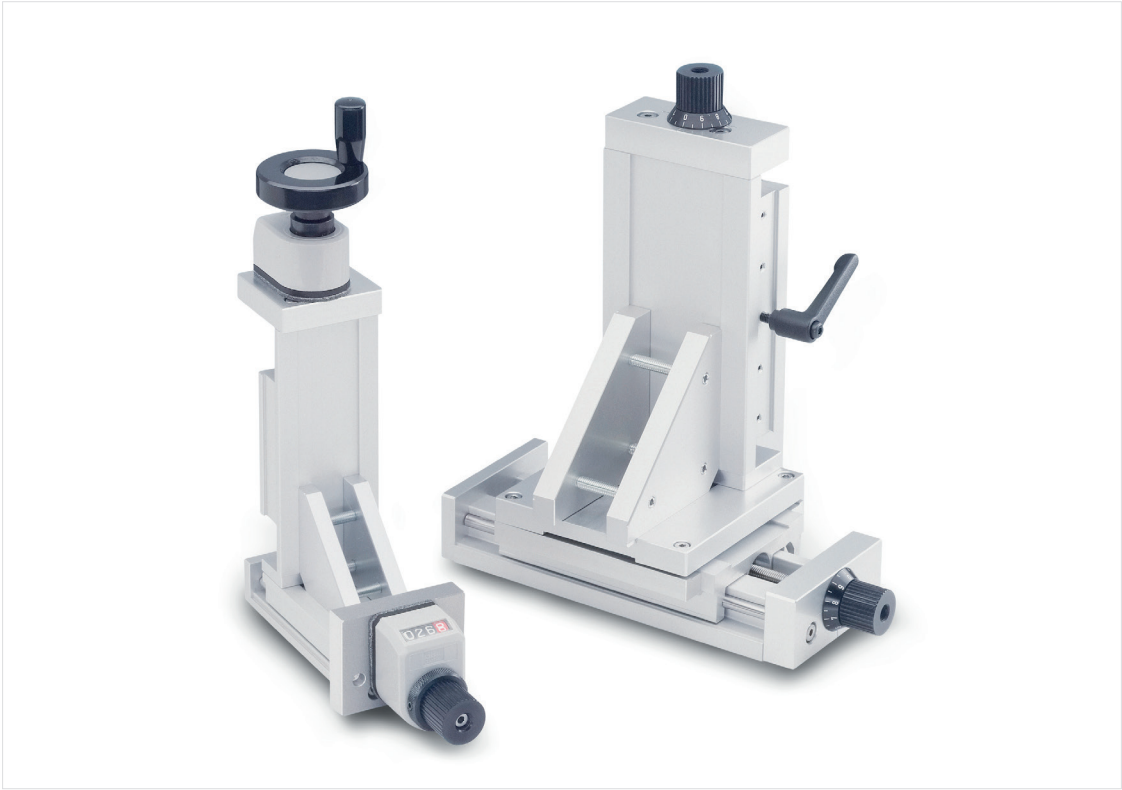
The small fixing plates serves for the 90° alignment of the Z-axis and fine adjustment of the adaptor plate (Type P).

All parts required to make up a set are included.

see also...

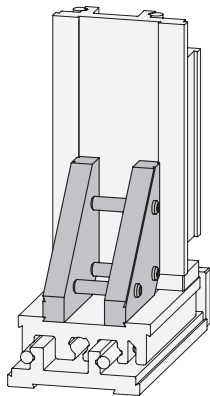
- *Adjustable Slide Units GN 900* → Page 1938

<b>How to order</b>	<b>1</b> <b>b</b>
<b>GN 900.3-120-120-P</b>	<b>2</b> <b>l<sub>1</sub></b>
	<b>3</b> <b>Type</b>

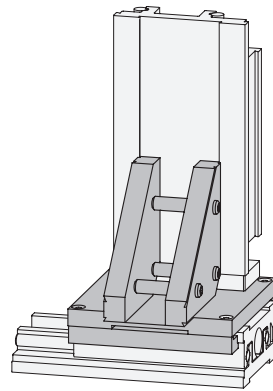


3.1  
3.2  
3.3  
3.4  
3.5  
3.6

**Installation example**



Type S



Type P

3.7  
**3.8**  
3.9

