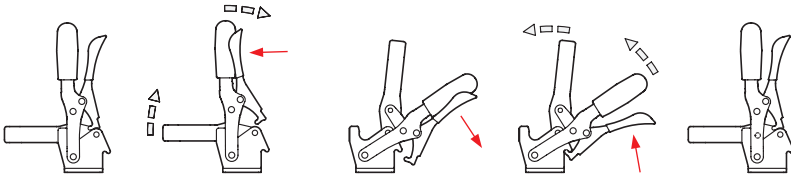


2 Type

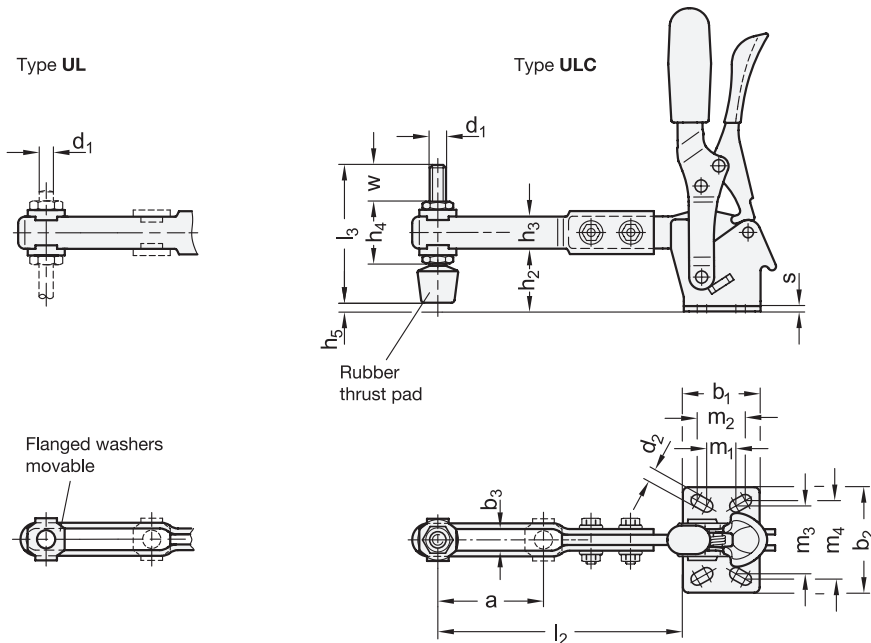
- UL** Clamping arm extended, with slotted hole and with two flanged washers
- ULC** Clamping arm extended, with slotted hole, two flanged washers and clamping screw GN 708.1

Operating principle



Size	F_H in N Holding capacity	$a \approx$	b_1	b_2	b_3	d_1	$d_2 \approx$	$h_1 \approx$	h_2	h_3	h_4	h_5 max.
130	500	67,5	35	42	6,3	M 6	5,5	142	28	16	25,5	11,3
230	1000	71,5	43	45	8,2	M 8	6,5	168	33,5	18	30	9,5

Size	$l_1 \approx$	$l_2 \approx$	l_3	m_1	m_2	m_3	m_4	$r \approx$	s	w Adjustable range
130	164	121	55	12,5	19	27	29	158	2,5	17,5
230	198	145,5	68	19,5	19,5	32	32	191	3	20



Specification

Tensioning mechanism

- Steel
- Sheet metal parts
- Case-hardened steel C10, zinc plated, blue passivated
- Bearing pins tempered
- Bearing rivets case-hardened
- Moving parts lubricated with special grease

Handle

- Plastic
- Red, oil resistant

Flanged washers GN 898

- Steel
- Zinc plated, blue passivated

Clamping screws GN 708.1 for type ULC

- Steel
- Zinc plated, blue passivated
- Rubber tip
- 85 Shore A
- Type A (flat pressure area)

RoHS

Toggle clamps GN 810.3 are latched in both end positions. In the clamped position, this prevents unintentional opening or opening caused by vibrations; and in the open position, it prevents self-closing of the toggle clamp, such as due to an extended clamping arm. The latching can be disabled with a single hand to allow for opening / closing.

They work according to the toggle principle: lever and clamping bar move in the same direction. In the clamped position the operating lever is in its vertical position.

Toggle clamps in the U-bar version with two flanged washers (type UL) can accommodate an application specific clamping screw. A clamping screw with neoprene rubber tip is also included for type ULC.

see also...

	Page
GN 810.10 Toggle Clamps („Longlife“)	QVX
GN 810.4 Toggle Clamps (with Vertical Mounting Base, with Extended Clamping Arm)	QVX

Technical Information

General Information for Toggle Clamps	QVX
---------------------------------------	-----

Accessory

Clamping Screws	QVX ff.
GN 801 Holders for Clamping Screws	QVX
GN 801.1 Clamping Arm Extenders	QVX
GN 801.2 Clamping Arm Extenders	QVX

How to order GN810.3-230-UL	1 Size
	2 Type