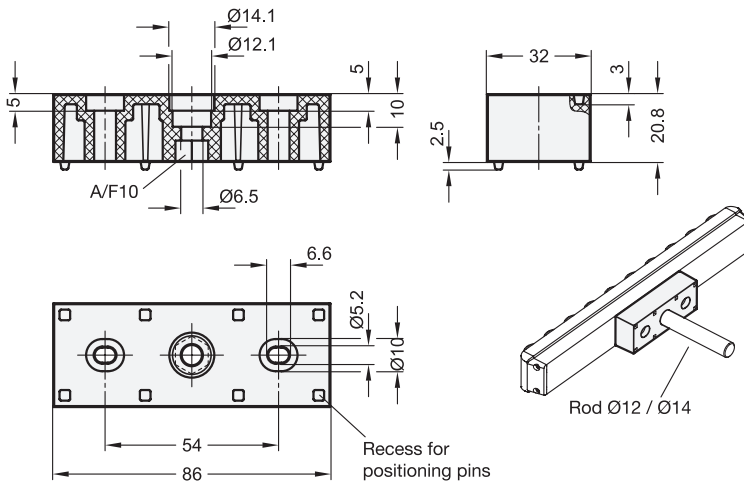


2 Type
B Block bracket
W Angle bracket



Specification

- Plastic
Polyamide (PA)
- Black
- Temperature resistant up to 90 °C
- *Plastic Characteristics* → Page 2158
- **RoHS**

Information

Mounting brackets GN 646.7 (Type W) can be used to mount roller rails at a right angle to the support surface, e.g. for the sideways transport of the conveyed material through roller rails. The positioning pins engage with the appropriate notches of the carrier rail profile GN 646.3 so that the angle is positioned in the correct location bracket and locked in place.

The mounting brackets (Type B) expand the mounting options for roller track assemblies. The dimensions match the angles. The positioning pins engage with the appropriate notches of the carrier rail profile GN 646.3 or into the appropriate recesses of the groove. Also, a retaining rod with Ø12 can be attached to the mounting block.

How to order

GN 646.7-54-W

- | | |
|----------|--------|
| 1 | Length |
| 2 | Type |

3.1
3.2
3.3
3.4
3.5
3.6
3.7
3.8
3.9

