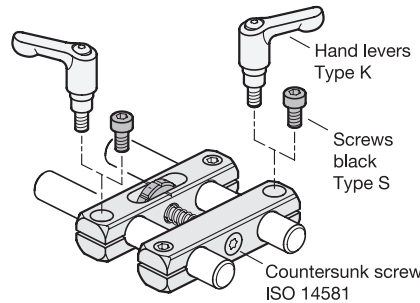
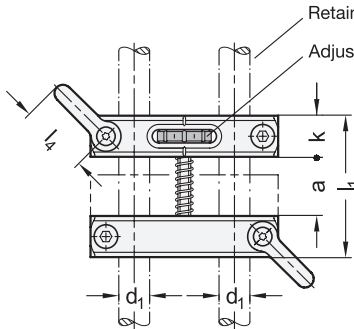
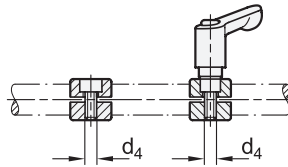
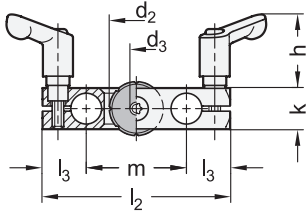


GN 474.3 Parallel Mounting Clamps with Adjustable Spindle

Aluminum



2 Type

- K** With two hand levers and two socket cap screws
- S** With four socket cap screws



d_1	a	d_2	d_3	d_4	h	k	l_1 max.	l_2	l_3	l_4	m
B 8	12	19	M 4	M 4	23,5	14	40	59	13,5	22	32
B 12	18	21	M 5	M 5	32	16	50	73	17	30	39
B 16	24	26	M 6	M 6	35	20	64	91	20,5	45	50

Specification



Clamp holder

Aluminum

- Matte finish, tumbled
- Anodized, black

MT
ELS

Adjustable clamping lever for type K

- Zinc die casting powder coated silver RAL 9006, textured finish
- Insert / Retaining screw Stainless steel AISI 303

Adjusting wheel

Stainless steel AISI 303

Thrust washer

Plastic

Socket cap screws ISO 4762

- Stainless steel
- 2x chemically blackened for type S
- 2x plain finish for type K / S

Countersunk screw ISO 14581

Stainless steel

Spring

Spring steel AISI 301

RoHS

Accessory

Page

GN 511 Clamping Kits	QVX
GN 480.1 Stainless Steel Retaining Rods / Retaining Tubes	QVX

Parallel mounting clamps with adjustable spindle GN 474.3 are used for adjusting measuring or test setups.

For coarse adjustments in millimeters, two adjacent clamping points are released so that the rod can be shifted quickly. When using retaining rods / retaining tubes GN 480.1 in type LS with longitudinal scale, their scale provides orientation during presetting.

For fine adjustments, two diagonally opposite clamping points are released. The relative position of the retaining rods/retaining tubes can then be set with the adjusting wheel. The adjusting distance can be read in 0.1 mm increments based on the knurled graduations. Due to the integrated spring, the adjustment is free of backlash.

see also...

	Page
GN 487 Swivel Ball Joint Mounting Clamps	QVX
GN 474 Two-Way Mounting Clamps	QVX
GN 474.1 Parallel Mounting Clamps	QVX
GN 476 T-Mounting Clamps	QVX
GN 477 Mounting Clamps	QVX

Technical Information

ISO Fundamental Tolerances	QVX
Stainless Steel Characteristics	QVX

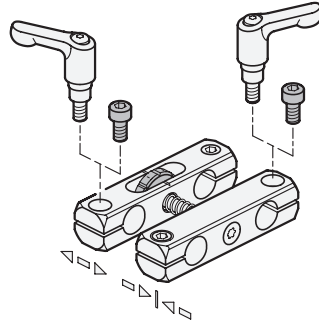
How to order

GN 474.3-B12-K-ELS

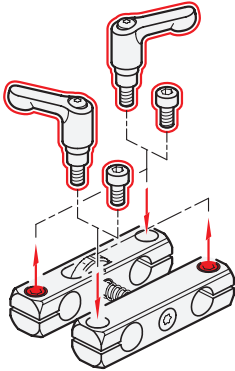
1	d_1
2	Type
3	Finish

Assembly variants

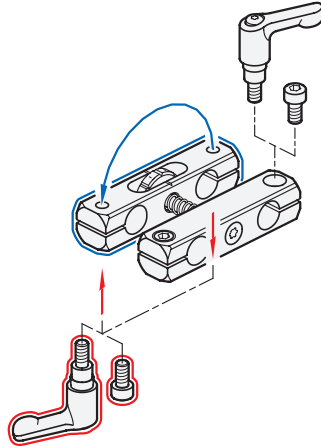
As delivered



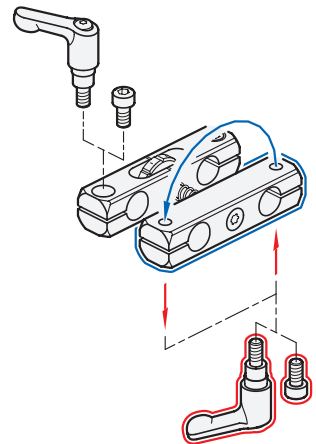
Clamping points inverted



Movable mounting clamp, angular and clamping point inverted

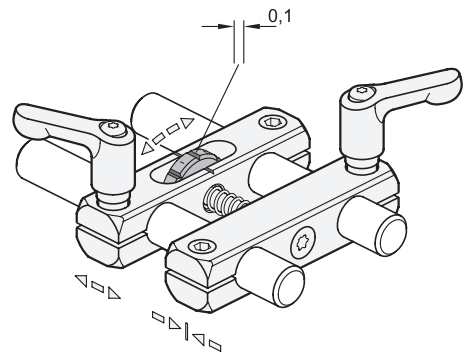
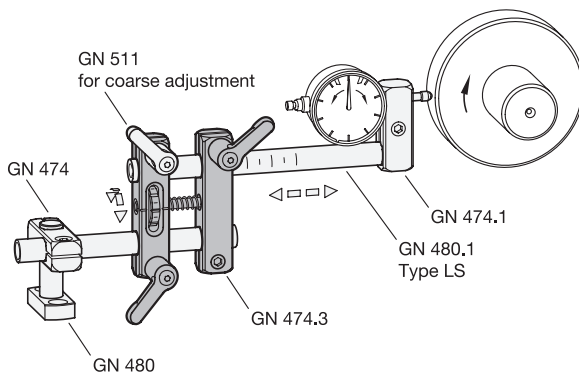


Fixed mounting clamp, angular and clamping point inverted



Application example

Adjustment



Line scaling on adjusting wheel for adjustment in 1/10 mm increments