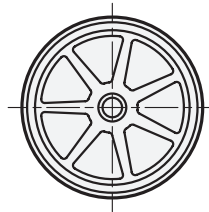
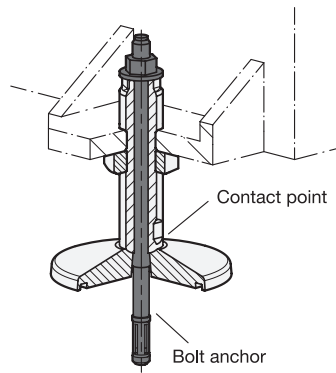


View from below



Application example



#### 4 Type (Foot plate)

- A Without rubber underlay
- B With rubber underlay
- C With O-ring

1

2

3

d <sub>1</sub>	d <sub>2</sub>	l <sub>1</sub>	d <sub>3</sub> H13	l <sub>2</sub> ≈	l <sub>3</sub>	s	A/F <sub>1</sub>	A/F <sub>2</sub>	Static load F in kN	
									Type A / C	Type B
80	M 20 x 1,5	60	9	27,5	15	3	16	16	40	20
100	M 24 x 2	70	11	30	17,5	4	19	19	50	30
125	M 30 x 2	90	13,5	38	21	5	24	24	80	50
160	M 36 x 2	110	17,5	45	27	6	30	30	120	70
200	M 42 x 2	125	22	55	33	8	36	36	150	110

## Specification

- Foot plate  
Steel, powder coated  
Black, RAL 9005, textured finish
- Threaded studs / Hexagon nut ISO 8675  
Steel, zinc plated, blue passivated
- Rubber underlay, inlaid  
Black, NBR  
85±5 Shore A
- O-ring, inlaid  
Black, NBR  
≈ 70 Shore A
- ISO Fundamental Tolerances → Page 2151
- Elastomer Characteristics → Page 2158
- RoHS

## Information

Machine feet GN 37 are characterized by their solid construction and large variety. They are used especially on large and heavy systems and machines. The through-hole allows the machine feet to be attached centrally to the ground, making them ideal for compressive and tensile loads.

Foot plates and threaded studs are not connected together, during setup they are automatically centered by the radius at the contact point.

Type B with rubber underlay prevents slipping to the side, protects delicate surfaces and dampens vibrations and tremors. With type C, the central screw hole is sealed by an O-ring in the foot plate on the ground. When used in conjunction with a collection pan, lubricants for example cannot escape to reach the underlying surface.

### How to order

1	d <sub>1</sub>
2	d <sub>2</sub>
3	l <sub>1</sub>
4	Type (Foot plate)

**GN 37-100-M24X2-70-C**