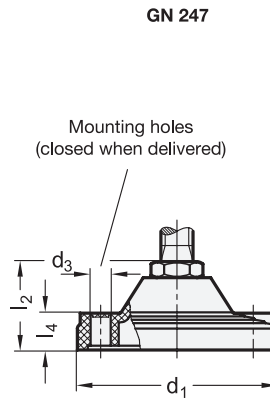
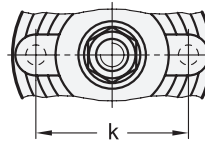
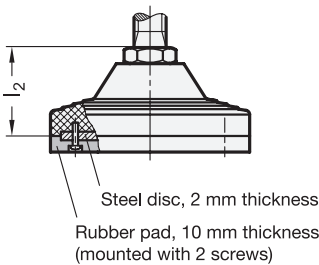


Type A / B



Type AG / BG



4 Type

- A** Without nut, without rubber pad
- B** With nut, without rubber pad
- AG** Without nut, with rubber pad
- BG** With nut, with rubber pad

d ₁	d ₂	l ₁	l ₂	l ₃	l ₄	d ₃	k	A/F	Static load in kN (see information)
125	M 20	95	155	55	45	23	12,5	24	40
125	M 24	95	155	55	45	23	12,5	24	40
125	M 30	155	-	55	45	23	12,5	30	40

Specification

- Foot
Plastic Technopolymer (Polyamide PA)
- Glass fiber reinforced
- Black, matte finish
- Temperature resistant up to 100 °C
- Threaded stud
- Steel zinc plated, blue passivated
- Property class 5.8
- Hexagon nut DIN 934
Steel zinc plated, blue passivated
- Rubber pad (NBR)
- 90 Shore A, black
- Reinforced by zinc plated steel disk
- Strength Values → Page 2152
- Elastomer Characteristics → Page 2158
- Plastic Characteristics → Page 2158
- RoHS

Information

Leveling feet GN 246 / GN 247 are known for their high static load capacity. The cost-effective bolt-to-foot connection allows an excursion of only ± 2°.

The values given in the table regarding the static load capacity serve as a guide only and if these are exceeded serious permanent deformation or breakage of the plastic foot could occur.

The values given above have been arrived at by a series of tests whereby a limited number of leveling feet were subjected for a limited time to a vertical static load in relation to the foot.

How to order (Without mounting holes)

1	d ₁
2	d ₂
3	l ₁
4	Type

GN 246-125-M30-155-AG

How to order (With mounting holes)

1	d ₁
2	d ₂
3	l ₁
4	Type

GN 247-125-M24-95-B

3.1
3.2
3.3
3.4
3.5
3.6
3.7
3.8
3.9