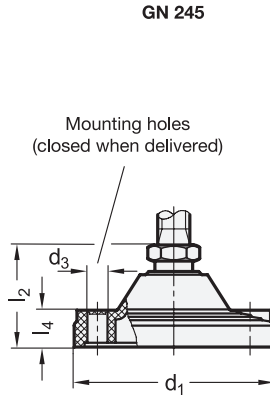


Type A / B

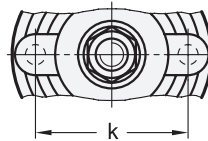
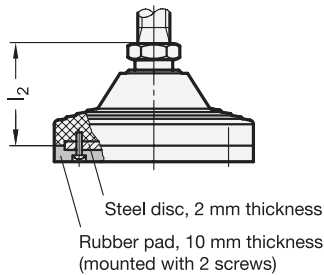


Type AG / BG



**4 Type**

- A** Without nut, without rubber pad
- B** With nut, without rubber pad
- AG** Without nut, with rubber pad
- BG** With nut, with rubber pad



| <b>1</b> d <sub>1</sub> | <b>2</b> d <sub>2</sub> | <b>3</b> l <sub>1</sub> | l <sub>2</sub> | l <sub>3</sub> | l <sub>4</sub> | d <sub>3</sub> | k    | A/F | Static load in kN (see information) |
|-------------------------|-------------------------|-------------------------|----------------|----------------|----------------|----------------|------|-----|-------------------------------------|
| 125                     | M 20                    | 136                     | 186            | 64             | 45             | 23             | 12,5 | 95  | 40                                  |
| 125                     | M 24                    | 136                     | 186            | 64             | 45             | 23             | 12,5 | 95  | 40                                  |
| 125                     | M 30                    | 136                     | 186            | 64             | 45             | 23             | 12,5 | 95  | 40                                  |

**Specification**

- Foot  
Plastic Technopolymer (Polyamide PA)
  - Glass fiber reinforced
  - Black, matte finish
  - Temperature resistant up to 100 °C
- Threaded stud
  - Steel zinc plated, blue passivated
  - Property class 5.8
- Hexagon nut DIN 934  
Steel zinc plated, blue passivated
- Rubber pad (NBR)
  - 90 Shore A, black
  - Reinforced by zinc plated steel disk
- Strength Values → Page 2152
- Elastomer Characteristics → Page 2158
- Plastic Characteristics → Page 2158
- RoHS

**Information**

Leveling feet GN 244 / GN 245 are known for their high static load capacity.

The values given in the table regarding the static load capacity serve as a guide only and if these are exceeded serious permanent deformation or breakage of the plastic foot could occur.

The values given above have been arrived at by a series of tests whereby a limited number of leveling feet were subjected for a limited time to a vertical static load in relation to the foot.

How to order (Without mounting holes)

**GN 244-125-M24-136-BG**

|          |                |
|----------|----------------|
| <b>1</b> | d <sub>1</sub> |
| <b>2</b> | d <sub>2</sub> |
| <b>3</b> | l <sub>1</sub> |
| <b>4</b> | Type           |

How to order (With mounting holes)

**GN 245-125-M20-186-A**

|          |                |
|----------|----------------|
| <b>1</b> | d <sub>1</sub> |
| <b>2</b> | d <sub>2</sub> |
| <b>3</b> | l <sub>1</sub> |
| <b>4</b> | Type           |