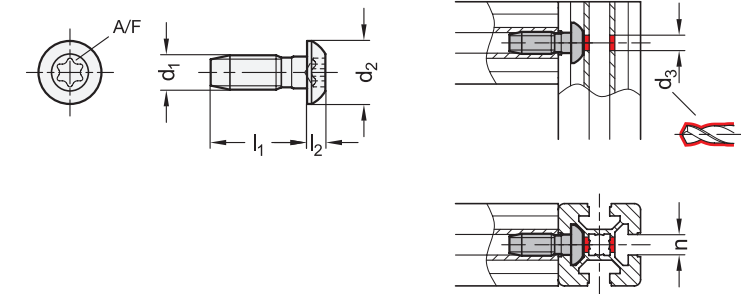
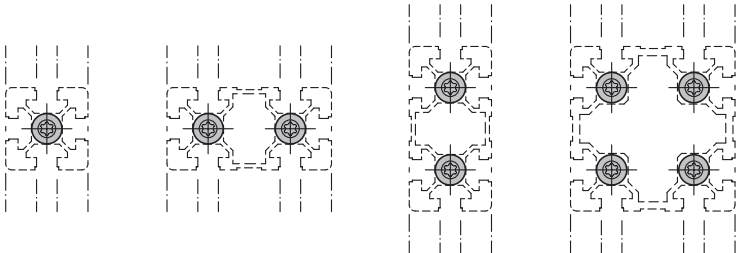


Assembly / profile machining



**4 Type**  
**A** Without cover cap

Use



<b>1</b> n	<b>2</b> d <sub>1</sub> Self-forming thread	<b>3</b> l <sub>1</sub>	d <sub>2</sub> ≈	d <sub>3</sub>	l <sub>2</sub> ≈	A/F	Tightening torque in Nm
8	S 8	25	16	7,8	4,5	T40	25
10	S 12	30	19	9,8	6	T50	35

Specification

**Steel**  
Zinc plated, blue passivated  
RoHS

**5**  
**SZ**

Central screws GN 21b connect aluminum profiles at right angles. Only one profile has to be machined. The thread in the end face profile hole is formed by the central screw itself. The self-forming thread should be lubricated to simplify assembly.

see also...	Page
<b>GN 10b</b> Aluminum Profiles (Profile Type Light)	QVX
<b>GN 10b</b> Aluminum Profiles (Profile Type Heavy)	QVX

How to order	1 n
	2 d <sub>1</sub>
	3 l <sub>1</sub>
	4 Type
	5 Material / Finish
<b>GN 21b-8S825-A-SZ</b>	